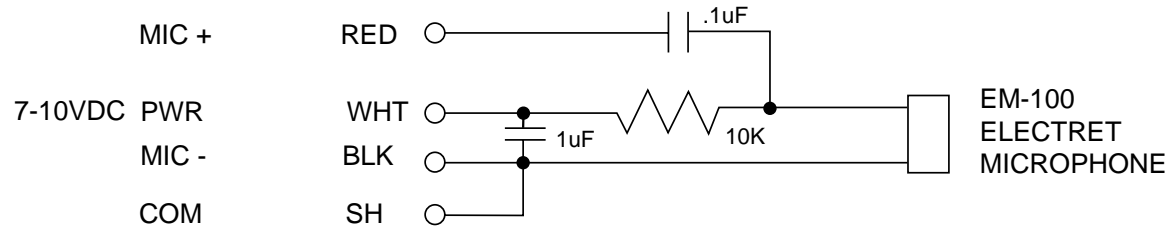



IC-29
CONNECTION
POINTS



Electret Condenser Microphone

Omni Directional Pattern
 100Hz - 10KHz Frequency Response
 1K Nominal Impedance
 Max Sensitivity -64dB Output level +/- 3dB @ 1K
 S/N Ratio ~ -40dB @ 1k
 Operating Voltage ~ 6V ~ 650uA Max
 Max Sound Level Input ~ -120 dB spl
 Operating Temperature -10C ~ +60C

IS-MIC Button Microphone Schematic		
 COMMUNICATIONS COMPANY inc. 9181 CHESAPEAKE DR SAN DIEGO, CA 92123	Drawn MSJ	Date 3/17/98
	Checked MSJ	Eng. DCJ
Ph (858)560-4162 Fax (858)560-1923		NO: 667-SD-1164